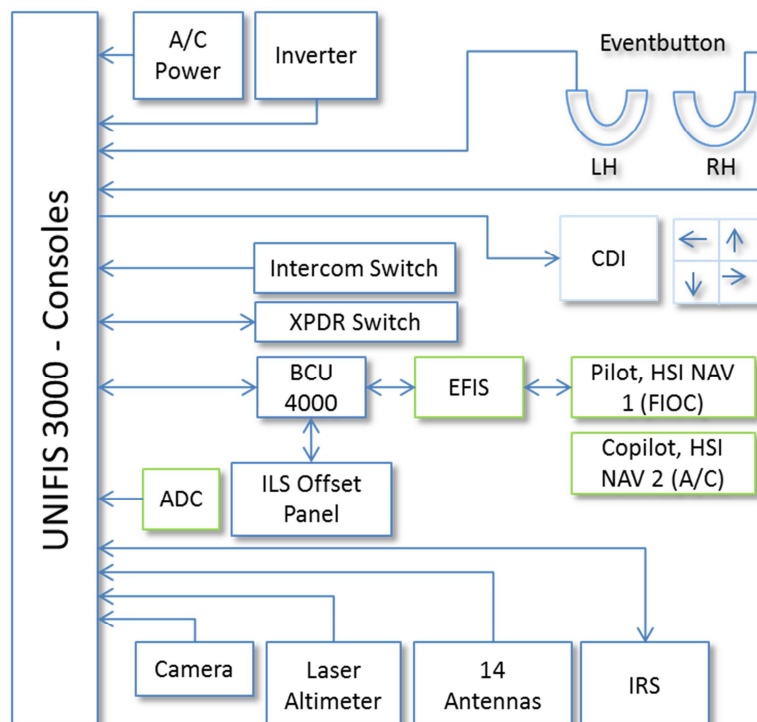


Installation of Flight Inspection System UNIFIS 3000 in a KINGAIR B300 - EASA STC 100 43 630

A Beechcraft King Air B300 was modified for flight inspection purposes with a UNIFIS 3000 System. This system consists of 14 antennas, a Flight Inspection Operator Console (FIOC), Flight Inspection Data Analysis Rack (FIDAR), laser altimeter, camera, inertial reference unit and CDI, to meet the defined purpose.



Beechcraft Berlin aviation designed the Seat Rail Adapter to mount the consoles on seat rails and an interconnection panel for a quick connect and disconnect of the consoles from the A/C and other systems. The connections are shown in the following block diagram.





ILS-OFFset – Panel

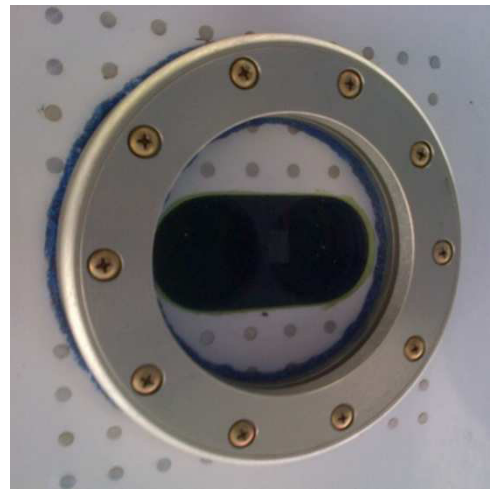


UNIFIS control and information
Panel



FIS-CDI and Arrow
OFFSET Annunciator

Laser Altimeter cutout



Belly mounted antennas

